



GMBH

samed

Produktkatalog
product catalog

Medical Equipment

Inhaltsverzeichnis

Urologie

„Plasma-Saline“ Resektoskop 6

| | |
|---|--|
| „Plasma-Saline“ Optiken und Arbeitselemente.....7 | |
| 0°7 | |
| 12°7 | |
| 30°7 | |
| 70°7 | |
| Arbeitselemente, passiv schneidend.....7 | |
| Arbeitselemente, aktiv schneidend7 | |
| Stecker, Generatorseite7 | |
| Stecker, Instrumentenseite.....7 | |

„Plasma-Saline“ Elektroden 8

| | |
|--|--|
| Schlingenelektrode, gerade8 | |
| Schlingenelektrode, gewinkelt 30°8 | |
| Premium Schlingenelektrode, gerade.....8 | |
| Kugelelektrode, ø 3 mm8 | |
| Kegelelektrode,8 | |
| Rollenelektrode, glatt, ø 3 mm8 | |
| Messerelektrode, gewinkelt 90°8 | |
| Vaporisationselektrode, gerieft, ø 3 mm8 | |
| Vaporisationselektrode, Spike.....8 | |

Resektoskopschäfte zur Dauerspülung .. 9

| | |
|--|--|
| Resektoskopschäfte zur Dauerspülung,.....9 | |
| drehbar 360°9 | |
| Komplett9 | |
| Innenschaft alleine.....9 | |
| Außenschaft alleine9 | |
| Obturator alleine.....9 | |
| Resektoskopschäfte zur Dauerspülung,.....9 | |
| starr9 | |
| Komplett9 | |
| Innenschaft alleine.....9 | |
| Außenschaft alleine9 | |
| Obturator alleine.....9 | |

Obturatoren für Resektoskopschäfte ... 10

| | |
|---|--|
| Standardobturator.....10 | |
| Sichtobturator10 | |
| Sichtobturator mit einem Instrumentenkanal10 | |

Zubehör 11

| | |
|--|--|
| Ellik Evakuator, nur Glaszylinder und Gummiball 11 | |
| Glaszylinder, allein.....11 | |

| | |
|--|--|
| Gummiball, allein.....11 | |
| Schlauchteil mit „SL“, SMART-LOCK-Anschluss.....11 | |

Gynäkologie

„Mini-Office“ Hysteroskope 12

Mini-Office „S“ System 13

| | |
|---|--|
| 0°13 | |
| 12°13 | |
| 30°13 | |
| Mini-Office „S“ Operations-Dauerspülschaft.....13 | |
| Innenschaft13 | |
| Außenschaft.....13 | |

Mini-Office „XS“ System 14

| | |
|---|--|
| 0°14 | |
| 12°14 | |
| 30°14 | |
| Mini-Office „XS“ Operations-Dauerspülschaft14 | |
| Innenschaft14 | |
| Außenschaft.....14 | |

Mini-Office Halbstarre Instrumente 15

| | |
|--|--|
| Schere, stumpf, Halb-Starr15 | |
| Schere, spitz, Halb-Starr.....15 | |
| Biopsie Stanze, Halb-Starr15 | |
| Alligatormaul Faszange, Halb-Starr15 | |
| Biopsiezange, Halb-Starr15 | |
| Myom Fixationsinstrument, flexibel15 | |
| Biopsiefaszange, Halb-Starr15 | |
| Tenaculum Faszange, Halb-Starr15 | |
| Tenaculum Faszange, Halb-Starr, 1x1 gezahnt ..15 | |
| Tenaculum Faszange, Halb-Starr, 1x2 gezahnt ..15 | |

Mini-Office Resektor „S“ 16

| | |
|---|--|
| Arbeitselement „S“, passiv schneidend16 | |
| Arbeitselement „S“, aktiv schneidend16 | |
| Resektoskopschaft „S“ zur Dauerspülung,16 | |
| drehbar 360°16 | |
| Komplett16 | |
| Innenschaft alleine.....16 | |
| Außenschaft alleine16 | |
| Obturator alleine.....16 | |
| Schlingenelektrode, gerade16 | |

| | |
|---|--|
| Schlingenelektrode, gewinkelt 30°16 | |
| Schlingenelektrode, gewinkelt 30°, Sharp-Cut.....16 | |
| Kugelelektrode, ø 3 mm16 | |
| Rollenelektrode, glatt, ø 3 mm16 | |
| Messerelektrode, gewinkelt 90°16 | |
| Stecker, Generatorseite16 | |

Mini-Office Flexible Bipol. Elektroden .. 17

| | |
|---|--|
| Kugelförmig.....17 | |
| Nadelförmig, gebogen17 | |
| Nadelförmig, gerade17 | |
| Nadelförmig 90°17 | |
| Stecker Instrumentenseite17 | |
| Stecker Generatoreseite, Bipolar.....17 | |

Micro-Office Resektor „XS“ 18

| | |
|---|--|
| Arbeitselement „XS“18 | |
| „XS“- Resektoskopschaft, Standard-Obturator18 | |
| Für Optik.....18 | |
| Komplett18 | |
| Schaft alleine18 | |
| Obturator alleine.....18 | |
| Schlingenelektrode, angewinkelt 90°, groß.....18 | |
| Schlingenelektrode, gerade18 | |
| Kugelelektrode18 | |
| Hakenelektrode.....18 | |
| Schlingenelektrode, angewinkelt 90°, klein.....18 | |
| Distanzscheibe.....18 | |
| Stecker, Generatorseite19 | |
| Optikbrücke für XS mit 1 Instrumentenkanal19 | |

Thorax

Mikroinstrumente für MIC 20

| | |
|---|--|
| Maryland, atraumatisch, gebogen, isoliert21 | |
| Schere, stumpf, gebogen, isoliert21 | |
| Nadelhalter, gerade, isoliert, mit Sperre21 | |
| Faszange, atraumatisch, gerade.....21 | |
| Faszange, atraumatisch, gerade.....21 | |
| Retraktor, isoliert21 | |
| 0°21 | |
| 12°21 | |
| 30°21 | |
| Trokarhülse.....22 | |

| | |
|---|--|
| Trokar (Halbmond).....22 | |
| Trokar stumpf22 | |
| Dichtung.....22 | |
| Hülse allein.....22 | |
| Trokar Dreikant.....22 | |
| Dichtkappen.....22 | |
| Ersatz-Silikonventil22 | |
| Saug-Spülgriff mit Trompetenventil.....22 | |
| Saug-Spülgriff mit Schiebventil22 | |
| Rundlochsauger, Standard23 | |
| Punktionskanüle.....23 | |
| Monopolarelektroden.....23 | |
| Spatelektrode.....23 | |
| L-Hakenelektrode23 | |
| J-Hakenelektrode.....23 | |
| Kugelelektrode23 | |
| Taststab, graduiert.....23 | |

Fasszangen / Dissektionszangen 24

| | |
|-------------------------------------|--|
| FIG. 300 MARYLAND, SERRATED24 | |
| FIG. 301 DE BAKY24 | |
| FIG. 302 MIXER 90°24 | |
| FIG. 30324 | |
| FIG.304.....24 | |
| FIG. 305 BIOPSY24 | |
| FIG. 306 FUNDUS24 | |
| FIG. 307 COBRA 2:1 TEEHT24 | |
| FIG. 308 MICRO DOLPHIN24 | |

Scheren 25

| | |
|------------------------------------|--|
| FIG. 310 METZENBAUM, CURVED.....25 | |
| FIG. 311 MICRO25 | |
| FIG. 312 HOOK25 | |
| FIG. 313 TROUGH CUTTING25 | |

Medizinisches Zubehör

HF-Generator..... 26

Galaxy SMART 27

| | |
|----------------------------------|--|
| Galaxy S UNIT.....27 | |
| „Plasma-Saline“ Software27 | |
| Fußschalter, kabellos.....27 | |
| Fußschalter, Kabel 5m27 | |

table of content

Urology

| |
|---|
| „Plasma-Saline“ Resectoscope..... 6 |
| „Plasma-Saline“ Scopes and Working elements.....7 |
| 0°.....7 |
| 12°.....7 |
| 30°.....7 |
| 70°.....7 |
| WORKING ELEMENTS, PASSIVE CUTTING.....7 |
| WORKING ELEMENTS, ACTIVE CUTTING.....7 |
| PLUG; UNIT SIDE.....7 |
| PLUG, INSTRUMENT SIDE.....7 |
| „Plasma-Saline“ Electrodes..... 8 |
| LOOP ELECTRODE, STRAIGHT.....8 |
| LOOP ELECTRODE, ANGLED 30°.....8 |
| PREMIUM LOOP ELECTRODE, STRAIGHT.....8 |
| BALL ELECTRODE, ø 3 mm.....8 |
| CONE ELECTRODE.....8 |
| ROLLE ELECTRODE, SMOOTH, ø 3 mm.....8 |
| KNIFE ELECTRODE, ANGLED 90°.....8 |
| VAPORIZATION ELECTRODE, SERRATED, ø 3 mm.....8 |
| VAPORIZATION ELECTRODE, SPIKE.....8 |
| Resectoscope sheaths for cont. Flow..... 9 |
| RESECTOSCOPE SHEATHS, ROTABLE 360°.....9 |
| COMPLETE.....9 |
| INNER SHEATH ONLY.....9 |
| OUTER SHEATH ONLY.....9 |
| OBTURATOR ONLY.....9 |
| RESECTOSCOPE SHEATHS, FIXED.....9 |
| COMPLETE.....9 |
| INNER SHEATH ONLY.....9 |
| COMPLETE.....9 |
| OBTURATOR ONLY.....9 |
| Obturators..... 10 |
| STANDARD OBTURATOR.....10 |
| VISUAL OBTURATOR.....10 |
| VISUAL OBTURATOR WITH ONE INSTRUMENT CHANNEL, 5 CHARR:.....10 |
| Accessories..... 11 |
| ELLIK EVACUATOR.....11 |
| GLASS BOWL, ONLY.....11 |
| RUBBER BOWL, ONLY.....11 |
| TUBE WITH „SL“, ONLY.....11 |

Gyneekologie

| |
|---|
| „Mini-Office“ Hysteroscope..... 12 |
| Mini-Office „S“ System..... 13 |
| 0°.....13 |
| 12°.....13 |
| 30°.....13 |
| MINI-OFFICE „S“, CONTINUOUS FLOW OPERATING SHEATH, COMPLETE.....13 |
| INNER SHEATH.....13 |
| OUTER SHEATH.....13 |
| Mini-Office „XS“ System..... 14 |
| 0°.....14 |
| 12°.....14 |
| 30°.....14 |
| MINI-OFFICE „XS“, CONTINUOUS FLOW OPERATING SHEATH, COMPLETE, „SL“-SMART-LOCK FIXATION.....14 |
| INNER SHEATH.....14 |
| OUTER SHEATH.....14 |
| Mini-Office semi-rigid instruments..... 15 |
| SCISSORS, BLUNT, SEMI-RIGID.....15 |
| SCISSORS, SHARP, SEMI-RIGID.....15 |
| BIOPSY PUNCH, SEMI-RIGID.....15 |
| ALIGATOR JAW GRASPING FORCEPS, SEMI-RIGID.....15 |
| BIOPSY FORCEPS, SEMI-RIGID.....15 |
| MYOMA FIXATIONS INSTRUMENT, FLEXIBLE.....15 |
| BIOPSY AND GRASPING FORCEPS, SEMI-RIGID.....15 |
| TENACULUM GRASPING FORCEPS, SEMI-RIGID.....15 |
| TENACULUM GRASPING FORCEPS, 1x1 TEETH.....15 |
| TENACULUM GRASPING FORCEPS, 1x2 TEETH.....15 |
| Mini-Office Resector „S“..... 16 |
| WORKING ELEMENT „S“, PASSIVE CUTTING.....16 |
| WORKING ELEMENT „S“, ACTIVE CUTTING.....16 |
| RESECTOSCOPE SHEATHS FOR CONTINUOUS FLOW, ROTABLE 360°.....16 |
| COMPLETE.....16 |
| INNER SHEATH ONLY.....16 |
| OUTER SHEATH ONLY.....16 |
| OBTURATOR ONLY.....16 |
| LOOP ELECTRODE, STRAIGHT.....16 |
| LOOP ELECTRODE, ANGLED 30°.....16 |
| LOOP ELECTRODE, ANGLED 30°, SHARP-CUT.....16 |
| BALL ELECTRODE, ø 3 mm.....16 |

| |
|--|
| ROLLE ELECTRODE, SMOOTH, ø 3 mm.....16 |
| KNIFE ELECTRODE, ANGLED 90°.....16 |
| PLUG; UNIT SIDE.....16 |

Mini-Office flexible bipolar electrodes . 17

| |
|-------------------------------------|
| BALL SHAPED.....17 |
| NEEDLE TYPE, CURVED.....17 |
| NEEDLE TYPE, STRAIGHT.....17 |
| NEEDLE TYPE, 90°.....17 |
| PLUG INSTRUMENT SIDE.....17 |
| PLUG GENERATOR SIDE, BIPOLAR.....17 |

Micro-Office Resector „XS“..... 18

| |
|---|
| WORKING ELEMENT „XS“, PASSIVE CUTTING, SINGLE STEM, BIPOLAR.....18 |
| „XS“- RESECTOSCOPE SHEATH WITH STANDARD OBTURATOR.....18 |
| COMPLETE.....18 |
| FOR SCOPE.....18 |
| COMPLETE.....18 |
| SHEATH ONLY.....18 |
| OBTURATOR ONLY.....18 |
| STOPCOCKS.....18 |
| LOOP ELECTRODE, ANGLED 90°, BIG.....18 |
| LOOP ELECTRODE, STRAIGHT.....18 |
| BALL ELECTRODE.....18 |
| HOOK ELECTRODE.....18 |
| LOOP ELECTRODE, ANGLED 30°, SMALL.....18 |
| DISTANCE RING.....18 |
| PLUG; UNIT SIDE.....19 |
| TELESCOPE BRIDGE FOR XS WITH 1 INSTRUMENT CHANNEL, 5 CHARR., WITH 2;0 MM SCOPE.....19 |

Thorax

Microinstruments for MIC..... 20

| |
|---|
| MARYLAND, ATRAUMATIC, CURVED, INSULATED.. 21 |
| SCISSORS, BLUNT, CURVED, INSULATED..... 21 |
| NEEDLE HOLDER, STRAIGHT, INSULATED, WITH RATCHET..... 21 |
| GRASPING FORCEPS, ATRAUMATIC, STRAIGHT, INSULATED, WITH RATCHET..... 21 |
| GRASPING FORCEPS, ATRAUMATIC, STRAIGHT, INSULATED, WITH RATCHET..... 21 |
| TISSUE RETRACTOR, INSULATED..... 21 |
| 0°.....21 |
| 12°.....21 |

| |
|---|
| 30°.....21 |
| TROCAR SHAETH.....22 |
| TROCAR (HALF MOON).....22 |
| TROCAR BLUNT.....22 |
| RUBBER SEAL.....22 |
| SHAETH only.....22 |
| TROCAR (PYRAMIDAL).....22 |
| SEALING CAPS.....22 |
| SPARE SILCON VALVE.....22 |
| SUCTION/IRRIGATION HANDLEWITH TRUMPET VALVES.....22 |
| SUCTION/IRRIGATION HANDLEWITH SLIDING VALVE.....22 |
| SUCTION TUBES, STANDARD.....23 |
| PUNCTION CANNULA.....23 |
| SPATULA ELECTRODE.....23 |
| L-HOOK ELECTRODE.....23 |
| J-HOOK ELECTRODE.....23 |
| BALL ELECTRODE.....23 |
| PALPATION PROBE, GRADUATED.....23 |

Forceps..... 24

| |
|-----------------------------------|
| FIG. 300MARYLAND, SERRATED.....24 |
| FIG. 301DE BAKY.....24 |
| FIG. 302MIXER 90°.....24 |
| FIG. 303.....24 |
| FIG.304.....24 |
| FIG. 305BIOPSY.....24 |
| FIG. 306FUNDUS.....24 |
| FIG. 307COBRA 2:1 TEEHT.....24 |
| FIG. 308MICRO DOLPHIN.....24 |

Clawes..... 25

| |
|----------------------------------|
| FIG. 310METZENBAUM,CURVED.....25 |
| FIG. 311MICRO.....25 |
| FIG. 312HOOK.....25 |
| FIG. 313TROUGH CUTTING.....25 |

Medical devices

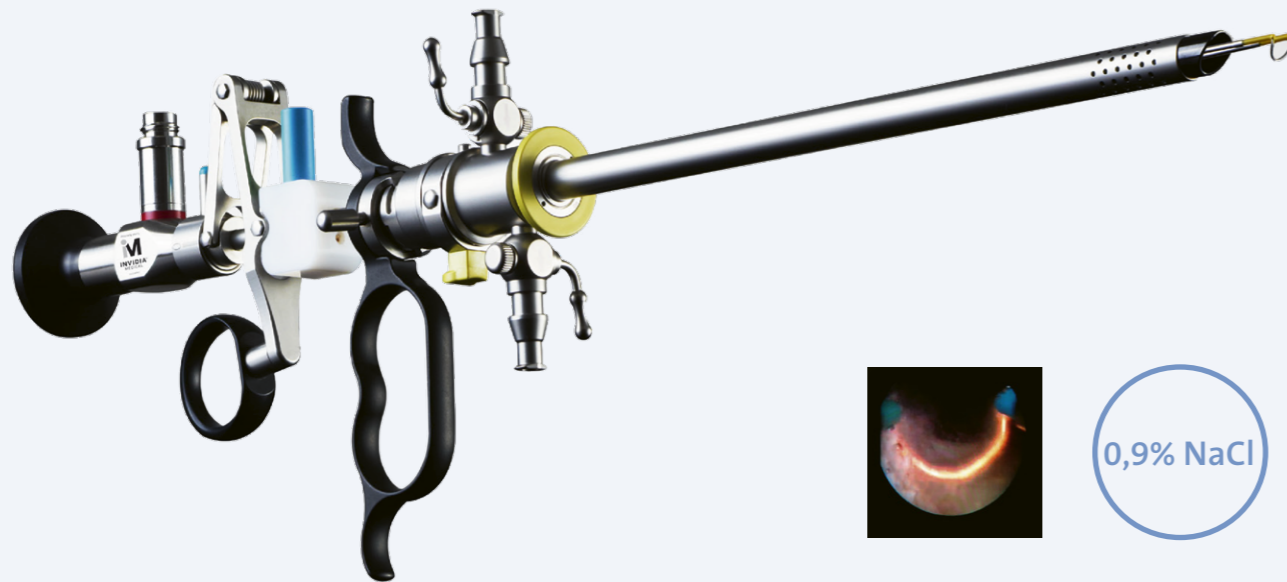
HF- Generator..... 26

Galaxy SMART..... 27

| |
|---------------------------------|
| Galaxy S UNIT.....27 |
| „Plasma-Saline“ Software.....27 |
| FOOT SWITCH, WIRELESS.....27 |
| FOOT SWITCH, CABLE 5M.....27 |

„Plasma-Saline“ Resektoskop

„Plasma-Saline“ Resectoscope



0,9% NaCl

- CLEAN AND PRECISE CUTTING AND COAGULATION
- NO NEED FOR PATIENT PLATE DUE TO THE USE OF BIPOLAR ENERGY
- MINIMIZED DEPTH OF TISSUE DENATURATION
- MINIMAL THERMAL SPREAD
- REDUCED RISK OF TUR SYNDROME DUE TO THE USE OF SALINE
- MINIMIZED STIMULATION OF OBTURATOR NERVE DUE TO BIPOLAR TECHNOLOGY
- SELF-CLEANING EFFECT OF LOOP-WIRE WHEN PLASMA IS ACTIVATED
- LIGHT AND WELL BALANCED INSTRUMENTS

ONE HF GENERATOR "GALAXY" FOR ALL HF APPLICATIONS:

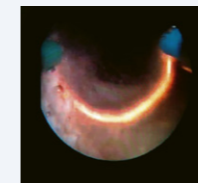
- MONOPOLAR, BIPOLAR, UROLOGY, GYNECOLOGY, GENERAL SURGERY, VESSEL SEALING, ARGON, GASTRO

„Plasma-Saline“ Optiken und Arbeitselemente

„Plasma-Saline“ Scopes and Working elements



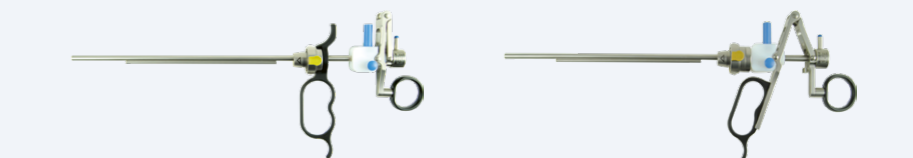
| Durchmesser DIAMETER | X=Nutzlänge X=WORKING LENGTH | Premium HD | 0° | 12° | 30° | 70° |
|-------------------------|---------------------------------|------------|-------------|-------------|-------------|-------------|
| 2,9mm | 300mm | Premium HD | S-72-292-00 | S-72-292-12 | S-72-292-30 | S-72-292-70 |
| 4,0mm | 302mm | Premium HD | S-72-402-00 | S-72-402-12 | S-72-402-30 | S-72-402-70 |



Kompatibel mit System
COMPATIBLE WITH SYSTEM

17,0 CHARR. „SL“
24 CHARR. „SL“

INVIDIA®
INVIDIA®



Arbeitselemente, passiv schneidend
WORKING ELEMENTS, PASSIVE CUTTING

Arbeitselemente, aktiv schneidend
WORKING ELEMENTS, ACTIVE CUTTING

| | |
|-------------|-------------|
| S-77-400-17 | S-77-401-17 |
| S-77-400-24 | S-77-401-17 |



Stecker, Generatorseite
PLUG; UNIT SIDE



INVIDIA®
KLS MARTIN
MAXIMUM

INVIDIA®
GALAXY SDS

Stecker, Instrumentenseite
PLUG, INSTRUMENT SIDE



S-67-596-45
4,5m

S-67-591-45
4,5m

„Plasma-Saline“ Elektroden
„Plasma-Saline“ Electrodes



17,0 CHARR. 24 CHARR.

Packung à 6 Stück
Box of 6 pcs.

Einläufig
single stem

| | | | | |
|-------------|-------------|--|--|--------------------|
| S-77-405-17 | S-77-405-24 | Schlingenelektrode, gerade LOOP ELECTRODE, STRAIGHT | | ONLY FOR 0,9% NaCl |
| S-77-410-17 | S-77-410-24 | Schlingenelektrode, gewinkelt 30° LOOP ELECTRODE, ANGLED 30° | | ONLY FOR 0,9% NaCl |
| S-77-411-24 | | Premium Schlingenelektrode, gerade PREMIUM LOOP ELECTRODE, STRAIGHT | | ONLY FOR 0,9% NaCl |
| S-77-430-17 | S-77-430-24 | Kugelelektrode, ø 3 mm BALL ELECTRODE, ø 3 mm | | ONLY FOR 0,9% NaCl |
| S-77-440-24 | | Kegelelektrode, CONE ELECTRODE | | ONLY FOR 0,9% NaCl |
| S-77-450-17 | S-77450-24 | Rollenelektrode, glatt, ø 3 mm ROLLE ELECTRODE, SMOOTH, ø 3 mm | | ONLY FOR 0,9% NaCl |
| S-77-455-17 | S-77-455-24 | Messerelektrode, gewinkelt 90° KNIFE ELECTRODE, ANGLED 90° | | ONLY FOR 0,9% NaCl |
| S-77-460-24 | | Vaporisationselektrode, gerieft, ø 3 mm VAPORIZATION ELECTRODE, SERRATED, ø 3 mm | | ONLY FOR 0,9% NaCl |
| S-77465-24 | | Vaporisationselektrode, Spike VAPORIZATION ELECTRODE, SPIKE | | ONLY FOR 0,9% NaCl |

Resektoskopschäfte zur Dauerspülung
Resectoscope sheaths for continuous Flow



Resektoskopschäfte zur Dauerspülung, drehbar 360°
RESECTOSCOPE SHEATHS FOR CONTINIUS FLOW, ROTABLE 360°

| Resektoskopschäfte zur Dauerspülung, drehbar 360° | | Komplett COMPLETE | Innenschaft alleine INNER SHEATH ONLY | Außenschaft alleine OUTER SHEATH ONLY | Obturator alleine OBTURATOR ONLY |
|---|------------------|-------------------|---------------------------------------|---------------------------------------|----------------------------------|
| 17 CHARR. „SL“ | 17,5 CHARR. „SL“ | S-77-417-00 | S-77-417-17 | S-77-417-18 | S-77-417-02 |
| 24 CHARR. „SL“ | 26 CHARR. „SL“ | S-77-424-00 | S-77-424-24 | S-77-424-26 | S-77-424-02 |



Resektoskopschäfte zur Dauerspülung, starr
RESECTOSCOPE SHEATHS FOR CONTINIUS FLOW, FIXED

| Resektoskopschäfte zur Dauerspülung, starr | | Komplett COMPLETE | Innenschaft alleine INNER SHEATH ONLY | Außenschaft alleine COMPLETE | Obturator alleine OBTURATOR ONLY |
|--|------------------|-------------------|---------------------------------------|------------------------------|----------------------------------|
| 17 CHARR. „SL“ | 17,5 CHARR. „SL“ | S-77-418-00 | S-77-418-17 | S-77-418-18 | S-77-417-02 |
| 24 CHARR. „SL“ | 26 CHARR. „SL“ | S-77-425-00 | S-77-425-24 | S-77-425-26 | S-77-424-02 |



Obturatoren für Resektoskopschäfte

Obturator



17 CHARR. „SL“

S-77-417-02

Standardobturator
STANDARD OBTURATOR

24 CHARR. „SL“

S-77-424-02



17 CHARR. „SL“

S-77-474-02

Sichtobturator
VISUAL OBTURATOR

24 CHARR. „SL“

S-77-444-02



24 CHARR. „SL“

S-77-446-02

Sichtobturator mit einem Instrumentenkanal, 5 CHARR.
VISUAL OBTURATOR WITH ONE INSTRUMENT CHANNEL, 5 CHARR.

Zubehör

Accessories



S-77-910-00

Ellik Evakuator, nur Glaszylinder und Gummiball
ELLIK EVACUATOR, ONLY GLASS BOWL AND RUBBER BALL

S-77-910-10

Glaszylinder, allein
GLASS BOWL, ONLY

S-77-910-20

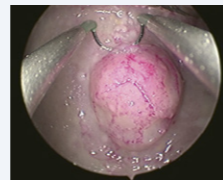
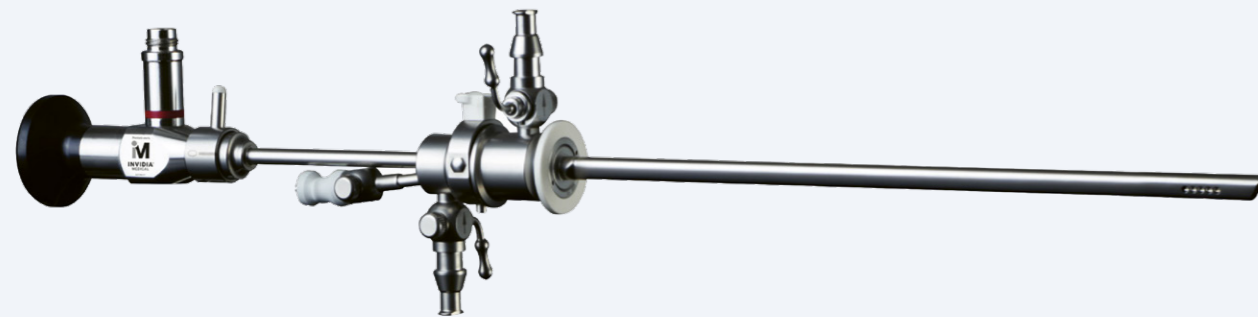
Gummiball, allein
RUBBER BOWL, ONLY

S-77-910-15

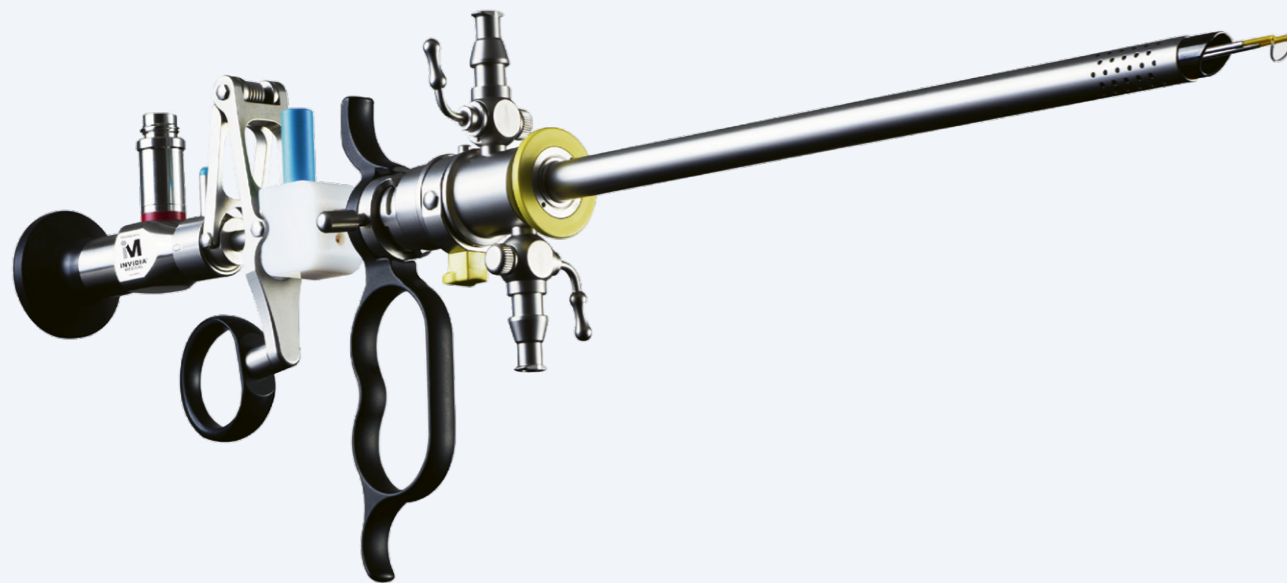
Schlauchteil mit „SL“, SMART-LOCK-Anschluss, allein
TUBE WITH „SL“, SMART-LOCK CONNECTION, ONLY

„Mini-Office“ Hysteroskope

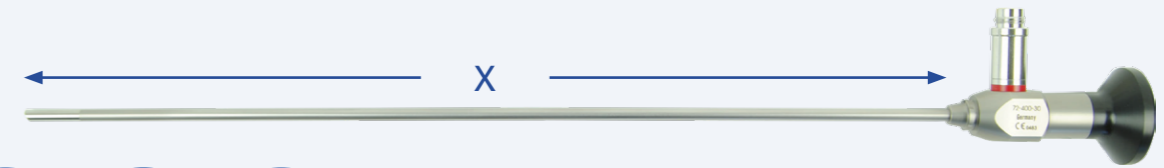
„Mini-Office“ Hysteroscope



SALINE
0,9% NaCl



Mini-Office „S“ System

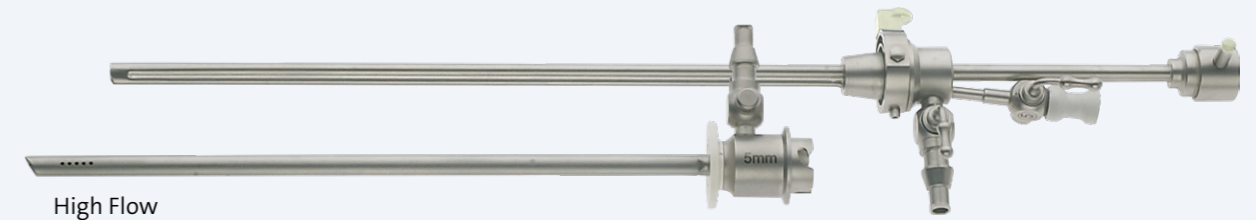


134° C
AUTOCLAVE
237° F

HD

2,7 mm
2,9 mm
OPTIC

| Durchmesser DIAMETER | X=Nutzlänge X=WORKING LENGTH | IF=INVIDIA® FLEX | 0° | 12° | 30° |
|-------------------------|---------------------------------|---------------------|-------------|-------------|-------------|
| 2,9 mm | 300 mm | Premium HD | S-72-292-00 | S-72-292-12 | S-72-292-30 |



134° C
AUTOCLAVE
237° F

SL
SMART-LOCK

▼

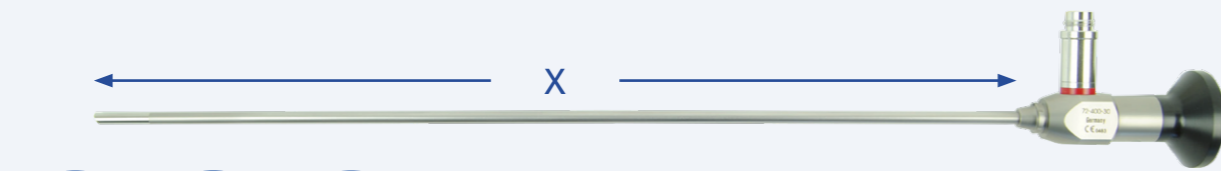
Mini-Office „S“ Operations-Dauerspülschaft, Komplett, „SL“ SMART-LOCK-Verschluss

MINI-OFFICE „S“, CONTINUOUS FLOW OPERATING SHEATH,
COMPLETE, „SL“-SMART-LOCK FIXATION

S-76-027-30

| Innenschaft INNER SHEATH | Für Optik FOR SCOPE | Durchmesser DIAMETER | Nutzlänge WORKING LENGTH | Instrumentenkanal INSTRUMENT CHANNEL |
|-----------------------------|------------------------|-------------------------|-----------------------------|---|
| S-77-027-23 | 30° | 4,3 mm | 200 mm | 5 CHARR. |
| Außenschaft OUTER SHEATH | Für Optik FOR SCOPE | Durchmesser DIAMETER | Nutzlänge WORKING LENGTH | |
| S-77-027-27 | 30° | 5,0 mm | 192 mm | |

Mini-Office „XS“ System



| Durchmesser DIAMETER | X=Nutzlänge X=WORKING LENGTH | 0° | 12° | 30° |
|-------------------------|---------------------------------|-------------|-------------|-------------|
| 2,0mm | 260mm | S-72-200-00 | S-72-200-12 | S-72-200-30 |



Mini-Office „XS“ Operations-Dauerspülschaft, Komplett, „SL“ SMART-LOCK-Verschluss

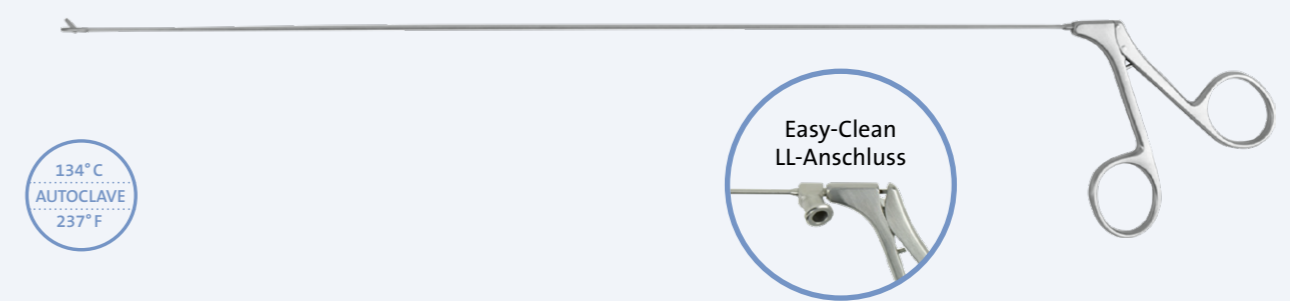
MINI-OFFICE „XS“, CONTINUOUS FLOW OPERATING SHEATH,
COMPLETE, „SL“-SMART-LOCK FIXATION

S-76-020-30

| Innenschaft INNER SHEATH | Für Optik FOR SCOPE | Durchmesser DIAMETER | Nutzlänge WORKING LENGTH | Instrumentenkanal INSTRUMENT CHANNEL |
|-----------------------------|------------------------|-------------------------|-----------------------------|---|
| S-77-020-23 | 30° | 3,6mm | 200mm | 5 CHARR. |
| Außenschaft OUTER SHEATH | Für Optik FOR SCOPE | Durchmesser DIAMETER | Nutzlänge WORKING LENGTH | |
| S-77-020-27 | 30° | 4,3mm | 192mm | |

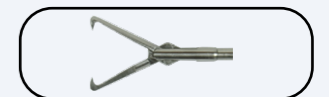
Mini-Office Halbstarre Instrumente

Mini-Office semi-rigid instruments



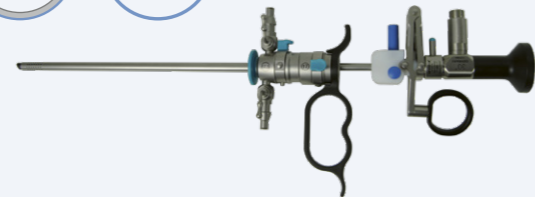
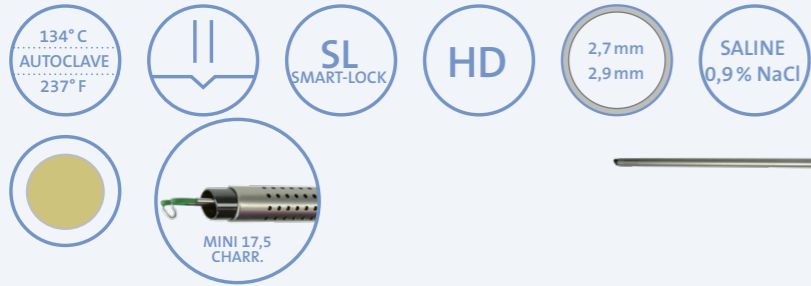
Easy-Clean
LL-Anschluss
LL-CONNECTION

- S-76-005-22 5 CHARR. **Schere, stumpf, Halb-Starr**
SCISSORS, BLUNT, SEMI-RIGID
- S-76-005-24 5 CHARR. **Schere, spitz, Halb-Starr**
SCISSORS, SHARP, SEMI-RIGID
- S-76-005-26 5 CHARR. **Biopsie Stanze, Halb-Starr**
BIOPSY PUNCH, SEMI-RIGID
- S-76-005-28 5 CHARR. **Alligatormaul Fasszange, Halb-Starr**
ALLIGATOR JAW GRASPING FORCEPS, SEMI-RIGID
- S-76-005-30 5 CHARR. **Biopsiezange, Halb-Starr**
BIOPSY FORCEPS, SEMI-RIGID
- S-76-005-12 5 CHARR. **Myom Fixationsinstrument, flexibel**
MYOMA FIXATIONS INSTRUMENT, FLEXIBLE
- S-76-005-34 5 CHARR. **Biopsiefasszange, Halb-Starr**
BIOPSY AND GRASPING FORCEPS, SEMI-RIGID
- S-76-005-36 5 CHARR. **Tenaculum Fasszange, Halb-Starr**
TENACULUM GRASPING FORCEPS, SEMI-RIGID
- „GRANADA 1x1“ S-76-005-38 5 CHARR. **Tenaculum Fasszange, Halb-Starr, 1x1 gezahnt**
TENACULUM GRASPING FORCEPS, SEMI-RIGID, 1x1 TEETH
- „GRANADA 1x2“ S-76-005-39 5 CHARR. **Tenaculum Fasszange, Halb-Starr, 1x2 gezahnt**
TENACULUM GRASPING FORCEPS, SEMI-RIGID, 1x2 TEETH



Mini-Office Resektor „S“

Mini-Office Resector „S“



Kompatibel mit System COMPATIBLE WITH SYSTEM

INVIDIA®

17,0 CHARR. „SL“

Arbeitselement „S“, passiv schneidend
WORKING ELEMENT „S“, PASSIVE CUTTING

S-77-400-17

Arbeitselement „S“, aktiv schneidend
WORKING ELEMENT „S“, ACTIVE CUTTING

S-77-401-17



Resektoskopschaft „S“ zur Dauerspülung, drehbar 360°
RESECTOSCOPE SHEATHS FOR CONTINUOUS FLOW, ROTABLE 360°

Komplett
COMPLETE

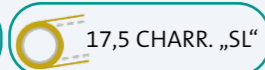
Innenschaft alleine
INNER SHEATH ONLY

Außenschaft alleine
OUTER SHEATH ONLY

Obturator alleine
OBTURATOR ONLY



17 CHARR. „SL“



17,5 CHARR. „SL“

S-77-417-00

S-77-417-17

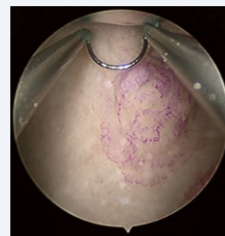
S-77-417-18

S-77-417-02

17,0 CHARR.

Packung à 6 Stück
Box of 6 pcs.

Einläufig
single stem



S-77-405-17

Schlingenelektrode, gerade
LOOP ELECTRODE, STRAIGHT



ONLY FOR 0,9% NaCl

S-77-410-17

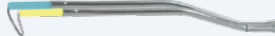
Schlingenelektrode, gewinkelt 30°
LOOP ELECTRODE, ANGLED 30°



ONLY FOR 0,9% NaCl

S-77-412-17

Schlingenelektrode, gewinkelt 30°, Sharp-Cut
LOOP ELECTRODE, ANGLED 30°, SHARP-CUT



ONLY FOR 0,9% NaCl

S-77-430-17

Kugelelektrode, ø 3 mm
BALL ELECTRODE, ø 3 mm



ONLY FOR 0,9% NaCl

S-77-450-17

Rollenelektrode, glatt, ø 3 mm
ROLLE ELECTRODE, SMOOTH, ø 3 mm



ONLY FOR 0,9% NaCl

S-77-455-17

Messerelektrode, gewinkelt 90°
KNIFE ELECTRODE, ANGLED 90°



ONLY FOR 0,9% NaCl



Stecker, Generatorseite
PLUG; UNIT SIDE

INVIDIA®
KLS MARTIN
MAXIMUM

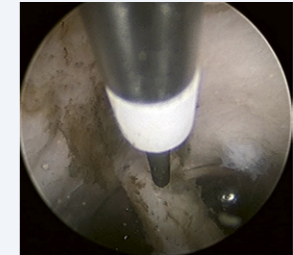
S-67-596-45
4,5 m

INVIDIA®
GALAXY SDS

S-67-591-45
4,5 m

Mini-Office Flexible Bipolare Elektroden

Mini-Office flexible bipolar electrodes



Flexibel, Bipolar
FLEXIBLE, BIPOLAR

X= 360 mm

5 CHARR.

Kugelförmig
BALL SHAPED



S-77-074-35

Nadelförmig, gebogen
NEEDLE TYPE, CURVED



S-77-075-35

Nadelförmig, gerade
NEEDLE TYPE, STRAIGHT



S-77-076-35

Nadelförmig 90°
NEEDLE TYPE, 90°

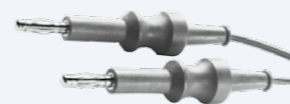


S-77-077-35



Stecker Generatoreseite, Bipolar
PLUG GENERATOR SIDE, BIPOLAR

Länge
LENGTH



INVIDIA
2-BANANA

3 m

S-67-500-30

S-67-502-30

5 m

S-67-500-50

S-67-502-50



ø 4 mm



ERBE

3 m

S-67-510-30

S-67-512-30

5 m

S-67-510-50

S-67-512-50



MARTIN
INTEGRA
AESCULAP, GK 55

3 m

S-67-520-30

S-67-522-30

5 m

S-67-520-50

S-67-522-50



VALLEYLAB
LAMIDAY
EMC

3 m

S-67-530-30

S-67-532-30

5 m

S-67-530-50

S-67-532-50



INVIDIA®
GALAXY SDS

3 m

S-67-570-30

S-67-572-30

5 m

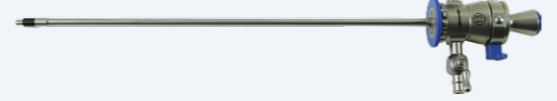
S-67-570-50

Micro-Office Resektor „XS“
Micro-Office Resector „XS“









S-77-400-13 **Arbeitselement „XS“;passiv schneidend, einläufig, Bipolar**
WORKING ELEMENT „XS“, PASSIVE CUTTING, SINGLE STEM, BIPOLAR

„XS“- Resektoskopschaft mit Standard-Obturator
„XS“- RESECTOSCOPE SHEATH WITH STANDARD OBTURATOR



| Kennfarbe COMPLETE | Für Optik FOR SCOPE | Komplett COMPLETE | Schaft alleine SHEATH ONLY | Obturator alleine OBTURATOR ONLY | Hähne STOPCOCKS | |
|-----------------------|------------------------|----------------------|----------------------------------|--|--------------------|---|
| „XS“ 13 CHARR. | Ø2,7mm - 0° - 302mm | S-77-270-00 | S-77-413-00 | S-77-413-01 | S-77-413-02 | 2 |
| | Ø2,7mm - 12° - 302mm | S-77-270-12 | | | | |

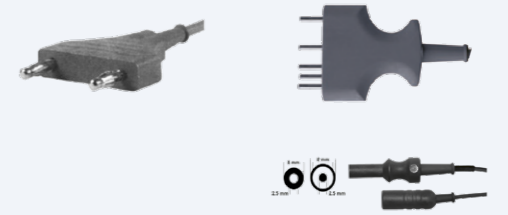
„XS“13 CHARR.

| | | |
|-------------|--|---|
| S-77-410-13 | Schlingenelektrode, angewinkelt 90°, groß LOOP ELECTRODE, ANGLED 90°, BIG |  |
| S-77-405-13 | Schlingenelektrode, gerade LOOP ELECTRODE, STRAIGHT |  |
| S-77-430-13 | Kugelelektrode BALL ELECTRODE |  |
| S-77-455-13 | Hakenelektrode HOOK ELECTRODE |  |
| S-77-412-13 | Schlingenelektrode, angewinkelt 90°, klein LOOP ELECTRODE, ANGLED 30°, SMALL |  |
| S-77-920-46 | Distanzscheibe DISTANCE RING |  |

Stecker, Generatorseite
PLUG; UNIT SIDE

INVIDIA®
KLS MARTIN
MAXIMUM
S-67-596-45
4,5 m

INVIDIA®
GALAXY SDS
S-67-591-45
4,5 m



S-77-413-12

Optikbrücke für XS mit 1 Instrumentenkanal, 5 CHARR., mit 2,0 mm Optik
TELESCOPE BRIDGE FOR XS WITH 1 INSTRUMENT CHANNEL, 5 CHARR., WITH 2,0MM SCOPE

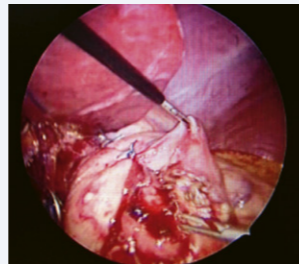
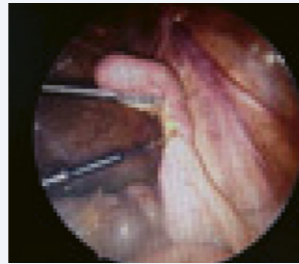
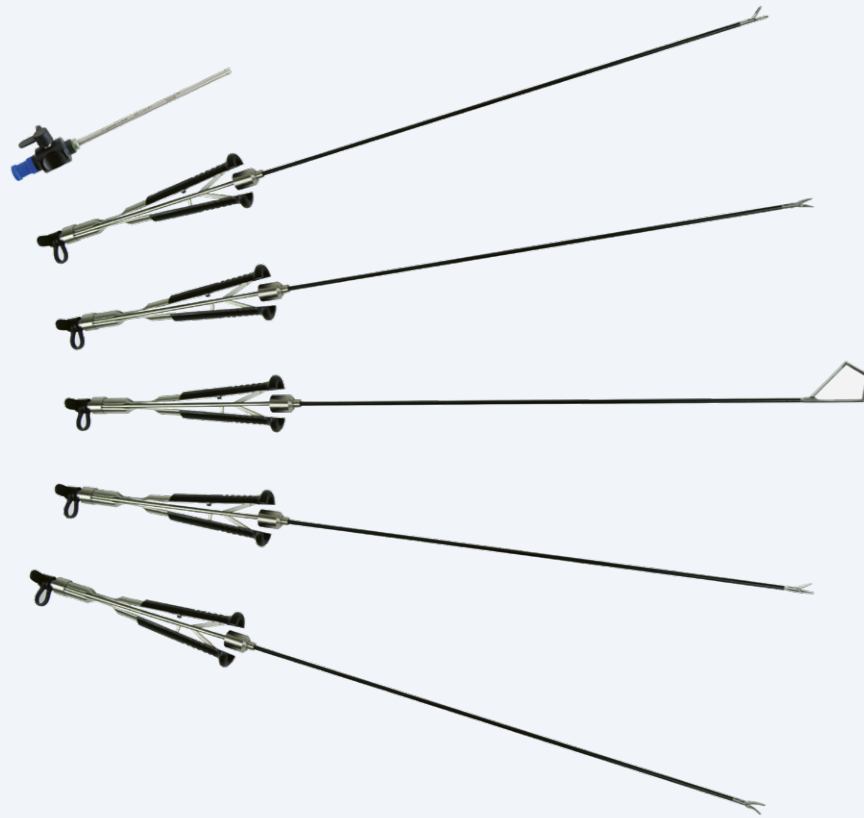


Ideal to practice with all Samed simulators!

For further information please feel free to contact us.

Mikroinstrumente für MIC

Microinstruments for MIC



- NEEDLE ENDOSCOPY
- MICRO-INVASIVE "KEY-HOLE" SURGERY
- SURGERY WITHOUT VISIBLE SCARS
- 2,8 MM INSTRUMENTS
- EXTREMELY FORM STABLE
- POST-OPERATIVE NO COSMETICALLY RELEVANT SCARS
- PENCIL-DESIGN ERGONOMIC LIGHT HANDLES
- WITH AND WITHOUT RATCHET
- COMPLETE RANGE OF INSTRUMENTS

134°C
AUTOCLAVE
237°F

2,8
mm



X= 180 mm X= 300 mm

S-74-330-18 S-74-330-30 **Maryland, atraumatisch, gebogen, isoliert**
MARYLAND, ATRAUMATIC, CURVED, INSULATED

S-74-332-18 S-74-332-30 **Schere, stumpf, gebogen, isoliert**
SCISSORS, BLUNT, CURVED, INSULATED

S-74-334-18 S-74-334-30 **Nadelhalter, gerade, isoliert, mit Sperre**
NEEDLE HOLDER, STRAIGHT, INSULATED, WITH RATCHET

S-74-336-18 S-74-336-30 **Fasszange, atraumatisch, gerade, isoliert, mit Sperre**
GRASPING FORCEPS, ATRAUMATIC, STRAIGHT, INSULATED, WITH RATCHET

S-74-337-18 S-74-337-30 **Fasszange, atraumatisch, gerade, isoliert, mit Sperre**
GRASPING FORCEPS, ATRAUMATIC, STRAIGHT, INSULATED, WITH RATCHET

S-74-338-18 S-74-338-30 **Retraktor, isoliert**
TISSUE RETRACTOR, INSULATED



134°C
AUTOCLAVE
237°F

2,8
mm



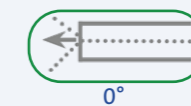
Durchmesser
DIAMETER

2,7 mm

X=Nutzlänge
X=WORKING LENGTH

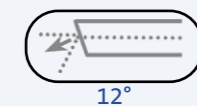
270 mm

IF= INVIDIA FLEX

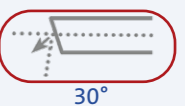


0°

S-72-273-00



12°



30°

S-72-273-30

134°C
AUTOCLAVE
237°F

2,8
mm

| | Durchmesser DIAMETER | Arbeitslänge WORKING LENGTH | Trokarhülse TROCAR SHAETH |
|-------------|-------------------------|--------------------------------|------------------------------|
| S-74-010-29 | 2,8 mm | 60 mm | |
| S-74-017-29 | 2,8 mm | 100 mm | |



| | Durchmesser DIAMETER | Arbeitslänge WORKING LENGTH | Trokar (Halbmond) TROCAR (HALF MOON) |
|-------------|-------------------------|--------------------------------|---|
| S-74-003-28 | 2,8 mm | 108 mm | |
| S-74-007-28 | 2,8 mm | 148 mm | |



| | Durchmesser DIAMETER | Arbeitslänge WORKING LENGTH | Trokar stumpf TROCAR BLUNT |
|-------------|-------------------------|--------------------------------|-------------------------------|
| S-74-005-28 | 2,8 mm | 108 mm | |
| S-74-008-28 | 2,8 mm | 148 mm | |



S-77-920-22 Dichtung
RUBBER SEAL

10



134°C
AUTOCLAVE
237°F

2,8
mm

| | Durchmesser DIAMETER | Arbeitslänge WORKING LENGTH | Hülse allein SHAETH only |
|--|-------------------------|--------------------------------|-----------------------------|
| | 2,9 mm | 100 mm | S-74-010-30 |



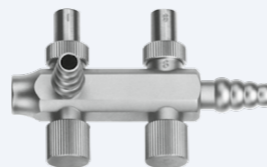
Trokar Dreikant
TROCAR (PYRAMIDAL)

S-74-003-30



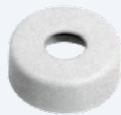
Saug-Spülgriff mit
Trompetenventil
SUCTION/IRRIGATION HANDLE
WITH TRUMPET VALVES

S-74-620-00



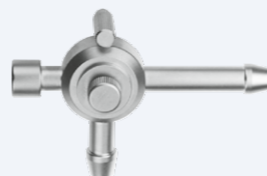
Dichtkappen
SEALING CAPS

S-74-080-01



Saug-Spülgriff mit
Schiebventil
SUCTION/IRRIGATION HANDLE
WITH SLIDING VALVE

S-74-620-04



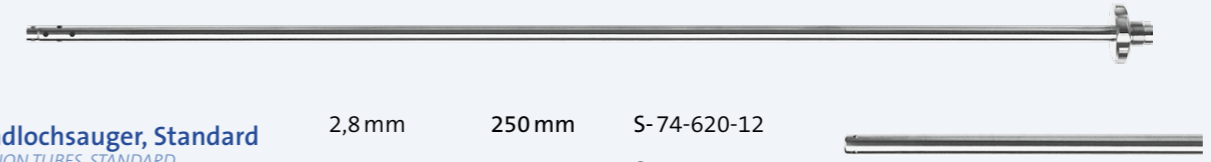
Ersatz-
Silikonventil
SPARE SILICON VALVE

S-74-010-00



Rundlochsauger, Standard
SUCTION TUBES, STANDARD

| | | |
|--------|--------|-------------|
| 2,8 mm | 250 mm | S-74-620-12 |
| 2,8 mm | 330 mm | S-74-620-13 |



Punktionskanüle
PUNCTION CANNULA

| | | |
|--------|--------|-------------|
| 2,8 mm | 250 mm | S-74-620-20 |
| 2,8 mm | 330 mm | S-74-620-21 |



X= 250 mm X= 330 mm Monopolarelektroden

S-67-244-22 S-67-244-32 Spatelektrode
SPATULA ELECTRODE



S-67-244-24 S-67-244-34 L-Hakenelektrode
L-HOOK ELECTRODE



S-67-244-26 S-67-244-36 J-Hakenelektrode
J-HOOK ELECTRODE



S-67-244-28 S-67-244-38 Kugelelektrode
BALL ELECTRODE



Taststab, graduiert
PALPATION PROBE, GRADUATED

| | | |
|--------|--------|-------------|
| 2,8 mm | 250 mm | S-74-627-04 |
| 2,8 mm | 330 mm | S-74-627-06 |



Fasszangen / Dissektionszangen

Forceps



Einsatz und Schaft
INSERT AND SHAFT

- 230 mm
- 330 mm
- 430 mm

Komplett, ohne Sperre
COMPLETE, WITHOUT RATCHAT



Komplett, mit Sperre
COMPLETE, WITH RATCHAT



FIG. 300
MARYLAND, SERRATED

- | | | |
|-------------|-------------|-------------|
| S-74-300-20 | S-74-300-21 | S-74-300-22 |
| S-74-300-30 | S-74-300-31 | S-74-300-32 |
| S-74-300-40 | S-74-300-41 | S-74-300-42 |



FIG. 301
DE BAKY

- | | | |
|-------------|-------------|-------------|
| S-74-301-20 | S-74-301-21 | S-74-301-22 |
| S-74-301-30 | S-74-301-31 | S-74-301-32 |
| S-74-301-40 | S-74-301-41 | S-74-301-42 |



FIG. 302
MIXER 90°

- | | | |
|-------------|-------------|-------------|
| S-74-302-20 | S-74-302-21 | S-74-302-22 |
| S-74-302-30 | S-74-302-31 | S-74-302-32 |
| S-74-302-40 | S-74-302-41 | S-74-302-42 |



FIG. 303

- | | | |
|-------------|-------------|-------------|
| S-74-303-20 | S-74-303-21 | S-74-303-22 |
| S-74-303-30 | S-74-303-31 | S-74-303-32 |
| S-74-303-40 | S-74-303-41 | S-74-303-42 |



FIG. 304

- | | | |
|-------------|-------------|-------------|
| S-74-304-20 | S-74-304-21 | S-74-304-22 |
| S-74-304-30 | S-74-304-31 | S-74-304-32 |
| S-74-304-40 | S-74-304-41 | S-74-304-42 |



FIG. 305
BIOPSY

- | | | |
|-------------|-------------|-------------|
| S-74-305-20 | S-74-305-21 | S-74-305-22 |
| S-74-305-30 | S-74-305-31 | S-74-305-32 |
| S-74-305-40 | S-74-305-41 | S-74-305-42 |



FIG. 306
FUNDUS

- | | | |
|-------------|-------------|-------------|
| S-74-306-20 | S-74-306-21 | S-74-306-22 |
| S-74-306-30 | S-74-306-31 | S-74-306-32 |
| S-74-306-40 | S-74-306-41 | S-74-306-42 |

FIG. 307
COBRA 2:1 TEEHT

- | | | |
|-------------|-------------|-------------|
| S-74-307-20 | S-74-307-21 | S-74-307-22 |
| S-74-307-30 | S-74-307-31 | S-74-307-32 |
| S-74-307-40 | S-74-307-41 | S-74-307-42 |



FIG. 308
MICRO DOLPHIN

- | | | |
|-------------|-------------|-------------|
| S-74-308-20 | S-74-308-21 | S-74-308-22 |
| S-74-308-30 | S-74-308-31 | S-74-308-32 |
| S-74-308-40 | S-74-308-41 | S-74-308-42 |

Scheren

Clawes



Einsatz und Schaft
INSERT AND SHAFT

- 230 mm
- 330 mm
- 430 mm

Komplett, ohne Sperre
COMPLETE, WITHOUT RATCHAT



FIG. 310
METZENBAUM,
CURVED

- | | |
|-------------|-------------|
| S-74-310-20 | S-74-310-21 |
| S-74-310-30 | S-74-310-31 |
| S-74-310-40 | S-74-310-41 |



FIG. 311
MICRO

- | | |
|-------------|-------------|
| S-74-311-20 | S-74-311-21 |
| S-74-311-30 | S-74-311-31 |
| S-74-311-40 | S-74-311-41 |



FIG. 312
HOOK

- | | |
|-------------|-------------|
| S-74-312-20 | S-74-312-21 |
| S-74-312-30 | S-74-312-31 |
| S-74-312-40 | S-74-312-41 |



FIG. 313
TROUGH CUTTING

- | | |
|-------------|-------------|
| S-74-313-20 | S-74-313-21 |
| S-74-313-30 | S-74-313-31 |
| S-74-313-40 | S-74-313-41 |

HF-Generator

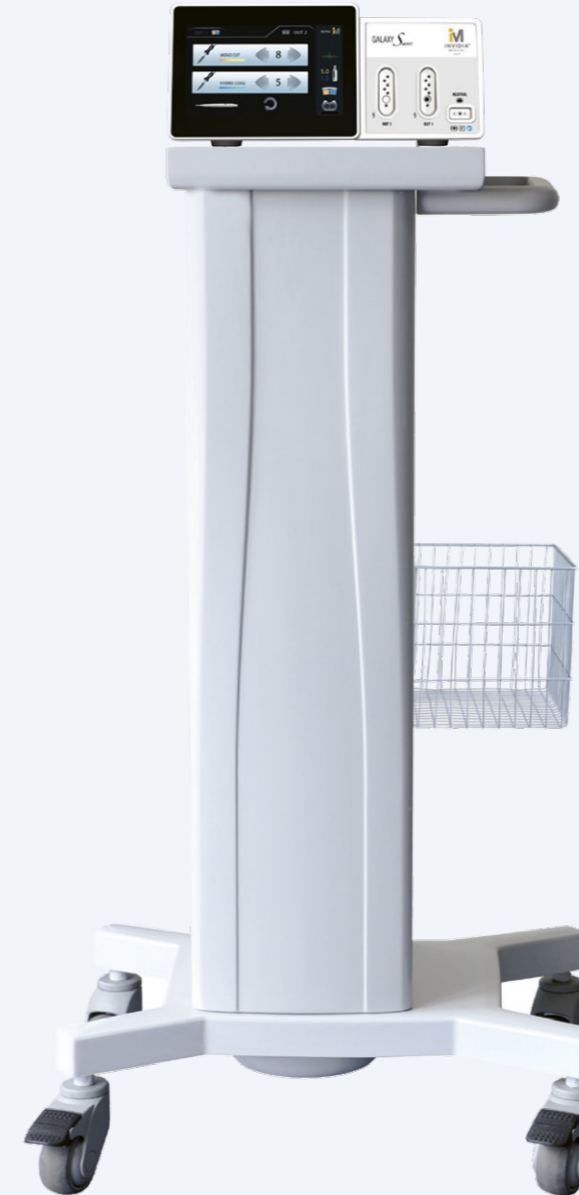
HF-Generator



- INVIDIA MEDICAL DESIGNED AN INNOVATIVE IDEA OF ELECTROSURGICAL GENERATOR.
- GALAXY SMART IS THE FIRST UNIT THAT IS SO EASY TO USE.
- SDS SMART DEVICE SYSTEM AUTOMATIC RECOGNITION OF THE CONNECTED INSTRUMENTS.
- DESIGNED FOR YOUR COMFORT AND FLEXIBILITY.
- CHOOSE THE MODES FOR YOUR APPLICATIONS. AND CREATE YOUR OWN CONFIGURATION.
- THE INNOVATIVE USER INTERFACE AND AUTOMATIC POWER REGULATION OF THE GALAXY SMART ASSURES UNIQUE SIMPLICITY OF WORK.
- ALL FEATURES OF GALAXY SMART ARE DESIGNED FOR EASE-OF-USE.

BE SMART. PLUG IN THE INSTRUMENTS AND OPERATE.

Galaxy SMART



GALAXY SMART THE SMART CHOICE:

- COMPACT SIZE FOR WIDE RANGE OF APPLICATIONS;
- ELECTROSURGICAL GENERATOR, ARGON MODULE AND VESSEL SEALING SYSTEM IN ONE SMALL UNIT;
- CUSTOMIZABLE MODE LIST;
- NEW USER INTERFACE AND LARGER SCREEN FOR EASY HANDLING;
- 3 X 32-BIT MICROPROCESSOR CONTROLLED;
- AUTOMATIC POWER REGULATION;
- FASTER REGULATION OF WORKING PARAMETERS;
- REAL-TIME MONITORING OF OUTPUT PARAMETERS;
- CONSTANT MONITORING OF ELECTRIC ARC;
- REVOLUTIONARY ARGON SOCKET;
- HIGHLY EFFECTIVE PLASMA SALINE RESECTION;
- SDS OUTPUTS FOR INSTRUMENTS RECOGNITION;
- WIRELESS FOOTSWITCH

S-66-403-00 **Galaxy S UNIT**

S-66-403-04 **„Plasma-Saline“ Software**

S-67-900-10 **Fußschalter, kabellos**
FOOT SWITCH, WIRELESS

S-67-900-12 **Fußschalter, Kabel 5m**
FOOT SWITCH, CABLE 5M



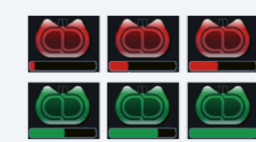
SDS SMART DEVICE SYSTEM FOR AUTOMATIC INSTRUMENT RECOGNITION



NEW „ASDS“ ARGON SOCKET WITH INTEGRATED ARGON CONNECTION



REAL TIME OUTPUT-POWER MONITORING



NEC SYSTEM CONSTANT NEUTRAL ELECTRODE CONTROL



PLASMA SALINE RESECTION



GMBH
samed

Samed GmbH Dresden
Bamberger Straße 7
01187 Dresden
GERMANY

CEO: Dipl. Ing. (FH) Thomas Sparborth

Tel.: +49 (0) 351 862 62 61
Fax: +49 (0) 351 453 96 59
www.samed-dresden.de
info@samed-dresden.de

Commercial register: HRB 7152
Amtsgericht Dresden
St.-Nr.: 203 118 04465
USt.-ID: DE 151798199